

Model 8
Table



Date

Name

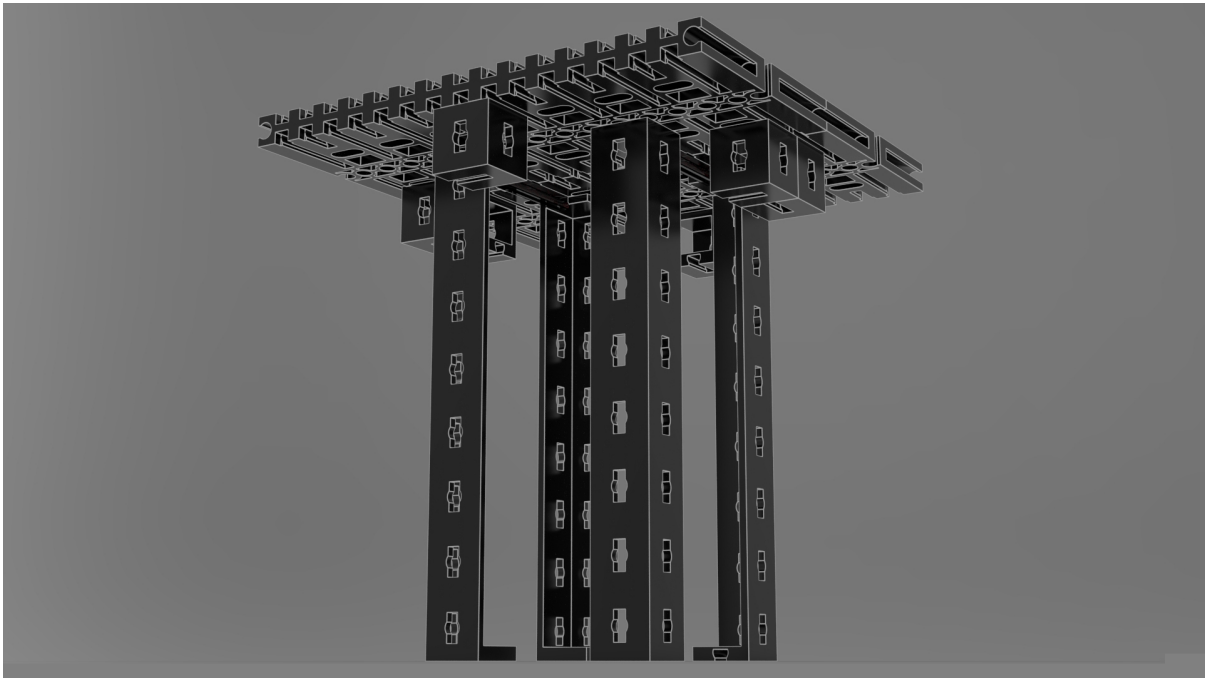
Class

DESIGN TASK

Construction task

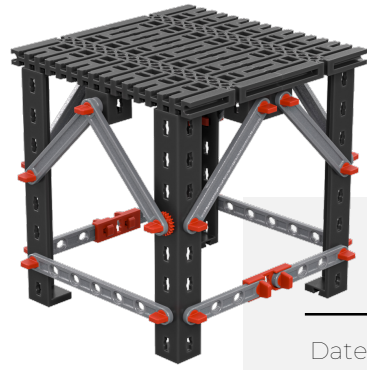
First build the table according to the assembly instructions, but leave out the diagonal struts.

Assemble the legs close together, as shown in this picture.



THEMATIC TASK

1. Press down on several points on the tabletop with your finger. What can you say about the table's tilting behavior? How stable are the legs?



Date

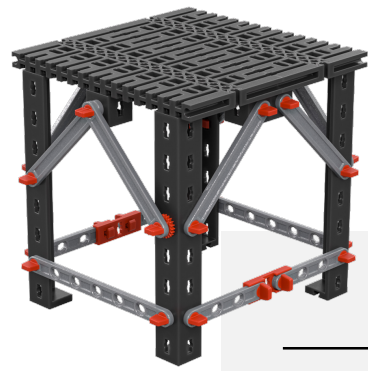
Name

Class

2. Now assemble the table according to the instructions.

What improvements does the "new model" offer? Where are the disadvantages in practical use?





EXPERIMENTAL TASK

How can you combine the experiences from both models so that they combine the advantages of both variants?

Tip:

Build the improved prototype on a smaller scale (a black plate as the tabletop), then you will need fewer parts.

Date

Name

Class

